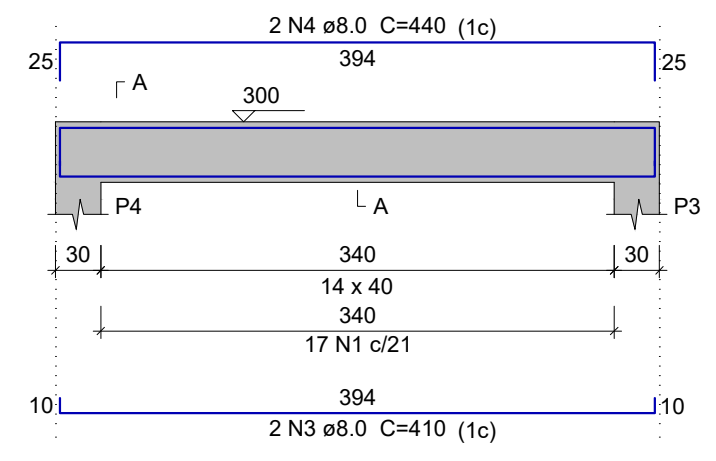
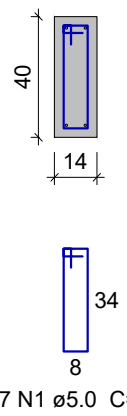


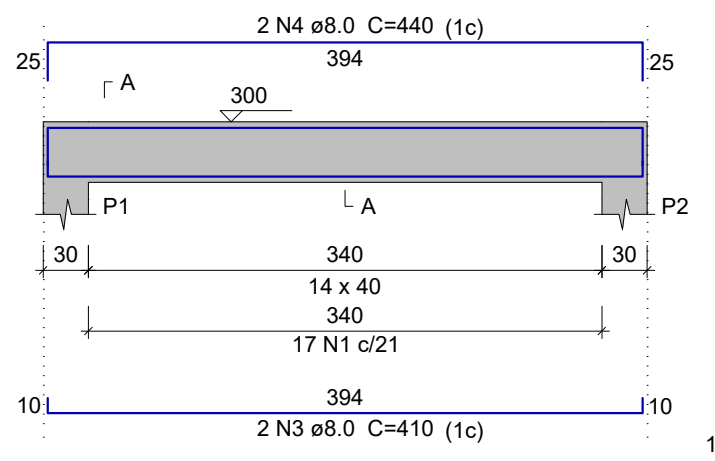
**V1**  
ESC 1:50



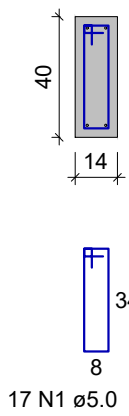
**SEÇÃO A-A**  
ESC 1:25



**V2**  
ESC 1:50



**SEÇÃO A-A**  
ESC 1:25



**Relação do aço**

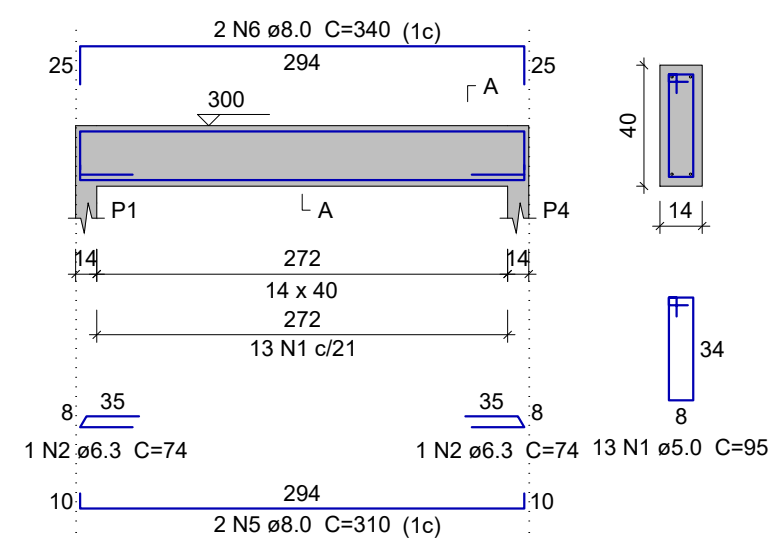
AÇO	N	DIAM (mm)	QUANT	C.UNIT (cm)	C.TOTAL (cm)
CA60	1	5.0	60	95	5700
CA50	2	6.3	4	74	296
	3	8.0	4	410	1640
	4	8.0	4	440	1760
	5	8.0	4	310	1240
	6	8.0	4	340	1360

**Resumo do aço**

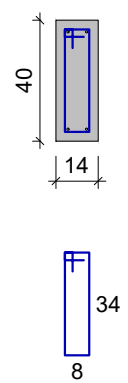
AÇO	DIAM (mm)	C.TOTAL (m)	QUANT + 10 % (Barras)	UNIT	PESO + 10 % (kg)
CA50	6.3	3	3	12 m	0.8
	8.0	60	6	12 m	26
CA60	5.0	57	-	rolo (170 kg)	9.7
<b>PESO TOTAL (kg)</b>					
CA50	26.8				
CA60	9.7				

Volume de concreto (C-25) = 0.69 m³  
Área de forma = 11.51 m²

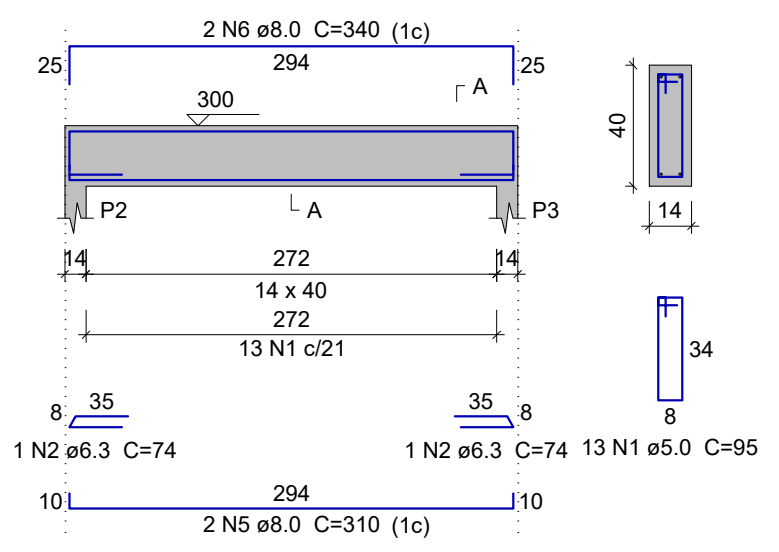
**V3**  
ESC 1:50



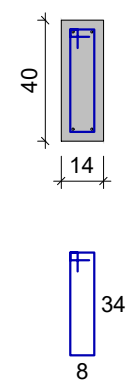
**SEÇÃO A-A**  
ESC 1:25



**V4**  
ESC 1:50



**SEÇÃO A-A**  
ESC 1:25



**REPÚBLICA FEDERATIVA DO BRASIL**  
**ESTADO DO PARÁ**  
**Prefeitura Municipal de Aveiro**

RESPONSÁVEL TÉCNICO:  
  
**Fabrcia M. T. Cardoso**  
*Engenheira Civil*  
CREA 1519887485

ASSUNTO: PROJETO ESTRUTURAL  
ENDEREÇO: Comunidade de Santa Cruz, Zona Rural, Aveiro-PA.

TÍTULO:  
**DETALHE VIGAS**

Desenho:  
Área:  
Data: JUNHO/2023  
Escala: INDICADO  
PRANCHA: 6/7