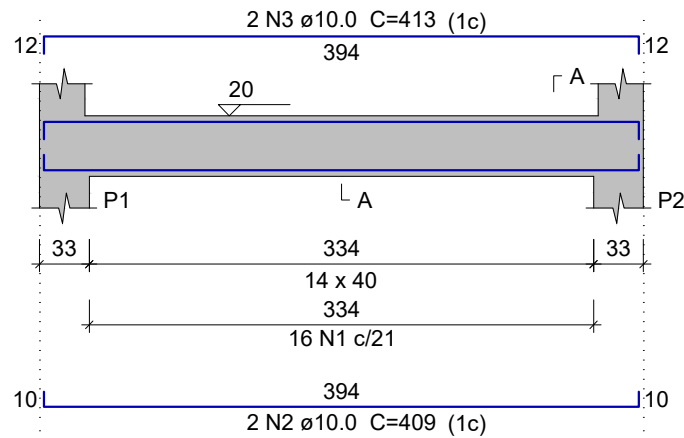


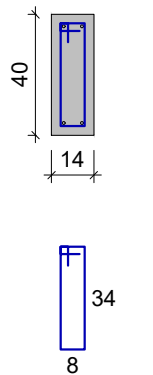
### V1

ESC 1:50



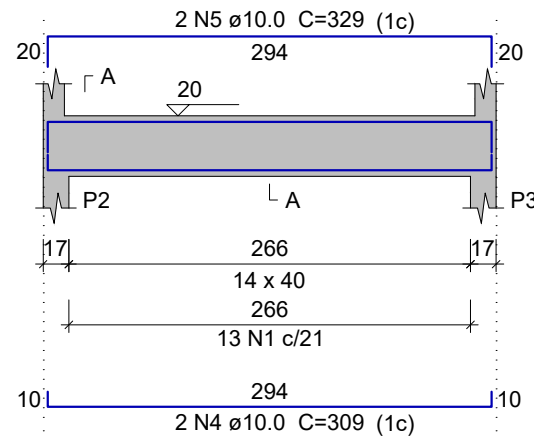
### SEÇÃO A-A

ESC 1:25



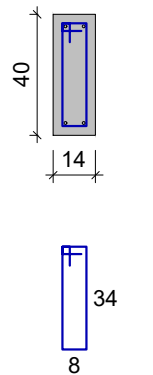
### V2

ESC 1:50



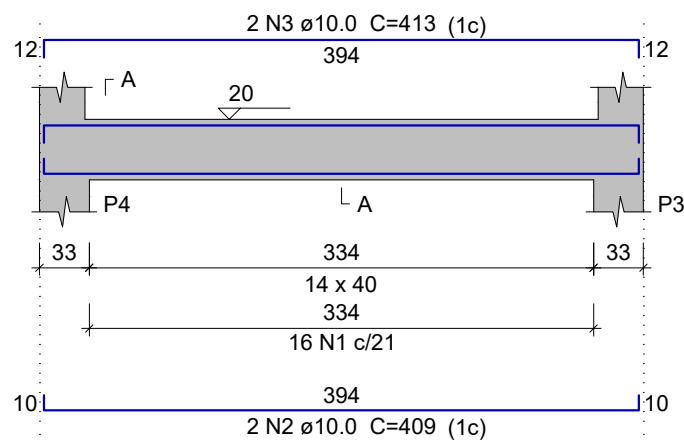
### SEÇÃO A-A

ESC 1:25



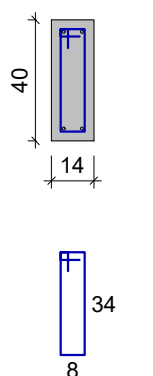
### V3

ESC 1:50



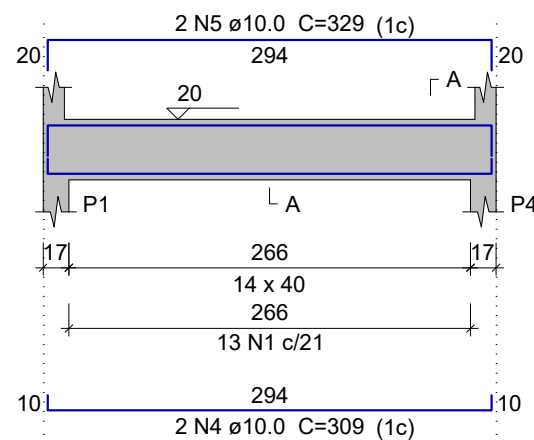
### SEÇÃO A-A

ESC 1:25



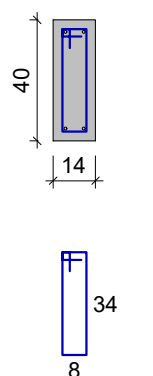
### V4

ESC 1:50



### SEÇÃO A-A

ESC 1:25



### Relação do aço

AÇO	N	DIAM (mm)	QUANT	C.UNIT (cm)	C.TOTAL (cm)
CA60	1	5.0	58	95	5510
CA50	2	10.0	4	409	1636
	3	10.0	4	413	1652
	4	10.0	4	309	1236
	5	10.0	4	329	1316

### Resumo do aço

AÇO	DIAM (mm)	C.TOTAL (m)	QUANT + 10 % (Barras)	UNIT	PESO + 10 % (kg)
CA50	10.0	58.4	6	12 m	39.6
CA60	5.0	55.1	-	rolo (170 kg)	9.3

PESO TOTAL (kg)	
CA50	39.6
CA60	9.3

Volume de concreto (C-25) = 0.67 m³  
Área de forma = 9.84 m²



**REPÚBLICA FEDERATIVA DO BRASIL**  
**ESTADO DO PARÁ**  
**Prefeitura Municipal de Aveiro**

RESPONSÁVEL TÉCNICO:

**Fabrcia M. T. Cardoso**  
*Engenheira Civil*  
CREA 1519887485

ASSUNTO: PROJETO ESTRUTURAL

ENDEREÇO: Comunidade de Santa Cruz, Zona Ruaral, Aveiro-PA.

TÍTULO:  
DETALHE VIGAS

Desenho:	
Área:	
Data:	JUNHO/2023
Escala:	INDICADO
PRANCHA:	2/7